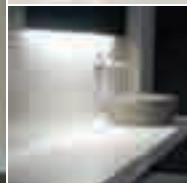
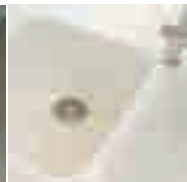
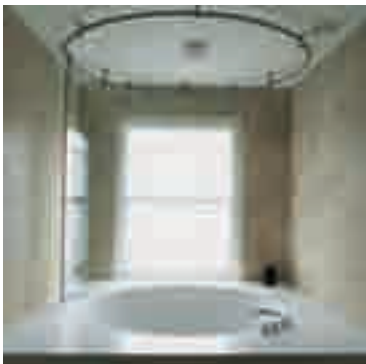


Corian® | **care**  
care and prevention for easy living | **home**



**corian.**

## Congratulations on Welcoming Corian® into Your Home!

Corian® is the original solid surface material made only by DuPont. In choosing Corian® for your kitchen or bathroom, you and your family can now enjoy years of practicality from this stylish, hygienic, easy to live with product.

### At Your Service

As the suppliers of Corian® Products, CASF Australia is committed to providing you with the highest levels of customer service.

Should you have any questions about caring for your Corian® surface, please contact our Customer Service Centre on 1800 267 426 or [corianinfo@casf.com.au](mailto:corianinfo@casf.com.au)

# Corian® Care

Keeping your Corian® surface looking great



Welcoming Corian® into your Home _____	4
Quick Summary Information _____	5
Corian® Prevention Tips _____	6
Simple Clean _____	8
Deep Clean _____	9
Cleaning Your Integrated Corian® Sink _____	10
Cleaning Your Corian® Bathroom _____	11

## Welcoming Corian® into Your Home



Our experience and feedback from our customers enables us to present you with this comprehensive Corian® Care booklet, outlining our recommendations for easy living with Corian®.

By nature, Corian® is easy to clean, easy to care for and easy to live with. Year after year, with proper care, Corian® can remain as beautiful and elegant as the day it was installed. However, Corian® is unlike any other material and there is a unique way to look after it. So let go of any assumptions you might have about caring for Corian®. The guidelines contained herein will help to ensure your Corian® surface continues to perform for many years to come.

## Quick Summary Information

### Your Corian® Finish

Your finish should be taken into consideration when you clean and care for Corian®. The most popular Corian® finish in Australia is a satin finish (slightly reflective look to the surface). If you are unsure or need to know about your finish, please contact your original Corian® fabricator or our Customer Service Centre on 1800 267 426.

### Your Colour of Corian®

Although Corian® is a material with unique properties, it has similar attributes to other materials when it comes to dark colours. As with most materials, dark heavily pigmented colours of Corian® are more sensitive and tend to show wear and tear more easily.

If you've chosen a dark colour for a high-use horizontal area (e.g. kitchen benchtop), please read the tips for preventing cuts and scratches on page 6 of this booklet.

### Corian® Prevention Tips

Prevention is always better than cure! Outlined are some helpful tips to help you understand how best to treat your Corian® surface, ensuring you get the most out of your investment in Corian® products.

### Corian® Care Options

When caring for Corian®, in most cases Simple Clean and Deep Clean will be the only methods you need to use. Always start with the easiest cleaning solution first (e.g. Simple Clean).

# Corian® Prevention Tips

As with anything, prevention is better than cure. With Corian® you can take comfort in knowing that should your Corian® surface be accidentally damaged, all but the most severe damage is repairable on site.

	Description	Best Prevention Tip
<b>Preventing Cuts &amp; Scratches</b>	Treat your Corian® surface as you would a fine timber. To avoid unnecessary marks, Corian® should not be used directly as a cutting surface.	Always use a separate cutting board. Avoid sliding items across the surface, particularly on dark colours (e.g. oven trays, cookware, etc.)
<b>Preventing Excessive Heat Damage</b>	Although Corian® resists high temperatures, hot pans and heat emitting appliances (e.g. electric frying pans) should not be placed directly on a Corian® surface. Excessive heat damage is not covered by your warranty.	Always use a heat pad or trivet (with rubber feet) for cookware or leave cookware to cool on the cooktop first. Never put hot pans, in particular cast iron pots or hot casserole dishes directly on a Corian® top or in a sink. Such heat can damage any surface.
<b>Preventing Other Damage</b>	Be aware of what your Corian® surface has been exposed to. Harsh chemicals may damage the surface (e.g. paint removers, oven cleaners, etc.)	Flush harsh chemicals with plenty of water immediately. Use non-acetone based nail polish removers to remove most types of nail polish.

	Description	Best Prevention Tip
<p>Preventing Excessive Heat Build-Up/ Reflection</p>	<p>Modern appliances reach higher temperatures quicker and often hold heat longer. In addition, certain cooking methods may cause heat to reflect onto your benchtop, leading to heat build-up that may damage your surface.</p>	<p>Always use the correct sized pan for the burner. Place it centrally.</p> <p>A pan that protrudes over the Corian® itself will result in heat being reflected onto the Corian®, possibly leading to unnecessary heat damage. This is particularly important for gas cooktops containing a wok burner. Remember, a wok burner is designed for a wok, not flat-bottomed saucepans.</p> <p>Do not use two burners as one (e.g. for a large flat-bottomed cast iron pan) as it has the same effect.</p> <p>To reduce heat, turn the burner down instead of pulling the utensil partially off the heat source.</p> <p>Please follow these guidelines, as damage caused by excessive heat is not covered by warranty.</p>

# Caring for Corian®

## Simple Clean

### Day-to-day cleaning

By nature, Corian® is easy to clean and easy to care for. As a general rule, when caring for Corian® always start with a Simple Clean. Avoid using abrasive scouring pads for routine cleaning.

### Managing day-to-day food spills

After food preparation and cooking simply wipe your Corian® surface with a damp sponge or cloth. Thanks to the non-porosity of Corian®, this will hygienically clean your Corian® surface.

### Most dirt & grime

Use soapy water or an ammonia-based cleaner (e.g. Spray n' Wipe†) along with a damp sponge or cloth. Rinse clean.

### Water marks

Wipe your surface with a damp sponge or cloth and towel dry. Hard water leaves visible water marks on Corian®, just as on glassware, which is why it should be wiped dry with a soft cloth. If marks persist, try the method outlined under Deep Clean – Stubborn Stains.

†Registered trademark of Colgate-Palmolive.





# Deep Clean

## Stubborn stains

For more stubborn stains you will need to occasionally give your Corian® surface a more thorough clean and refresh using a mild abrasive cleanser like Gumption®\* paste cleanser, Jif† Cream Cleanser or Ajax‡ cream or powder cleanser.

Firmly wipe your Corian® surface with either a white or blue Scotch-Brite™ pad or a damp cloth, using a wide circular motion. Always finish by rinsing and wiping your surface with a damp cloth or sponge. The Vileda§ range of cloths and non-scratch scourers are recommended by Corian®.

## Light marks & scuffs

Most light marks and scuffs may be removed by wiping your surface firmly with a damp sponge or cloth and a mild abrasive cleanser. However, if this technique fails to work, please contact our Customer Service Centre on 1800 267 426 to personally discuss other care alternatives.

Please be aware, using abrasive cleansers on your Corian® surface may change your sheen level. By routinely cleaning the entire surface consistency in sheen should return over time.



Available nationally from most supermarkets. \*Registered trademark of the Clorox International Company. †Registered trademark of Unilever. ‡Registered trademark of Colgate-Palmolive. ™Registered trademark of the 3M Company. §Registered trademark of Freudenberg Household Products.



## Cleaning your Integrated Corian® Sink

### Simple clean

Fats and oils can easily be removed using a damp sponge or cloth along with washing-up liquid or a general purpose ammonia-based cleanser.

### Deep clean

Food preparation stains or discolouration (from wine, tea, vegetable oils, food residues, etc.) can build up on the surface of a Corian® sink. To remove such stains, use a white or blue Scotch-brite™ pad and a mild abrasive cleanser, such as Gumption, Ajax powder/cream cleanser or Jif cream cleanser and rinse with water.

If hard water scale has built up around the waste or taps, use a standard household lime-scale remover and follow the manufacturer's instructions.

Please note that green Scotch-brite™ pads should not be used on your Corian® benchtop.



## Cleaning Your Corian® Bathroom



Corian® vanity tops, shower walls, bases and bath surrounds are convenient due to their ease of cleaning. A simple wipe with a soapy sponge, followed by a rinse is all it takes to care for a Corian® bathroom surface.

However, lime scale, soap build-up or water spotting do call for more attention. A Deep Clean (refer to page 9) using a damp sponge or cloth and a mild abrasive cleanser is all that is needed.



Cover – Left: Corian® Glacier White bath surround; Top: Glacier White integrated Corian® Sink; Bottom: benchtop and vanity by Boffi in Glacier White; Right: Glacier White upstand design by Form Follows Function. Contents – Left: Benchtop in Raffia; Centre: Corian® integrated vanity bowl in Glacier White in Glacier White vanity benchtop; Right: Corian® Flint benchtop continuing onto a Glacier White tabletop. Page 4 – Left: Corian® Glacier white benchtop design by Leon Moulton; Top centre: Design by Minosa™; Bottom centre: Heat Rods integrated in a White Jasmine Corian® benchtop; Right: Custom made vanity bowl in Corian® Tranquil. Page 10 – Top: Glacier White Corian® Sink integrated into a White Jasmine Corian® Benchtop; Centre: Corian® Glacier White sink on a Glacier White benchtop; Bottom: Corian® Glacier White sink on a Glacier White benchtop. Back Cover: Corian® Concrete Colour Range.



**For more information**  
**1800 267 426 [www.corian.com.au](http://www.corian.com.au)**

©Copyright 2009. E.I. duPont deNemours and Company.  
®Corian is a DuPont registered trademark for its solid surfaces. Only DuPont makes Corian®.



**corian.**  
SOLID SURFACES